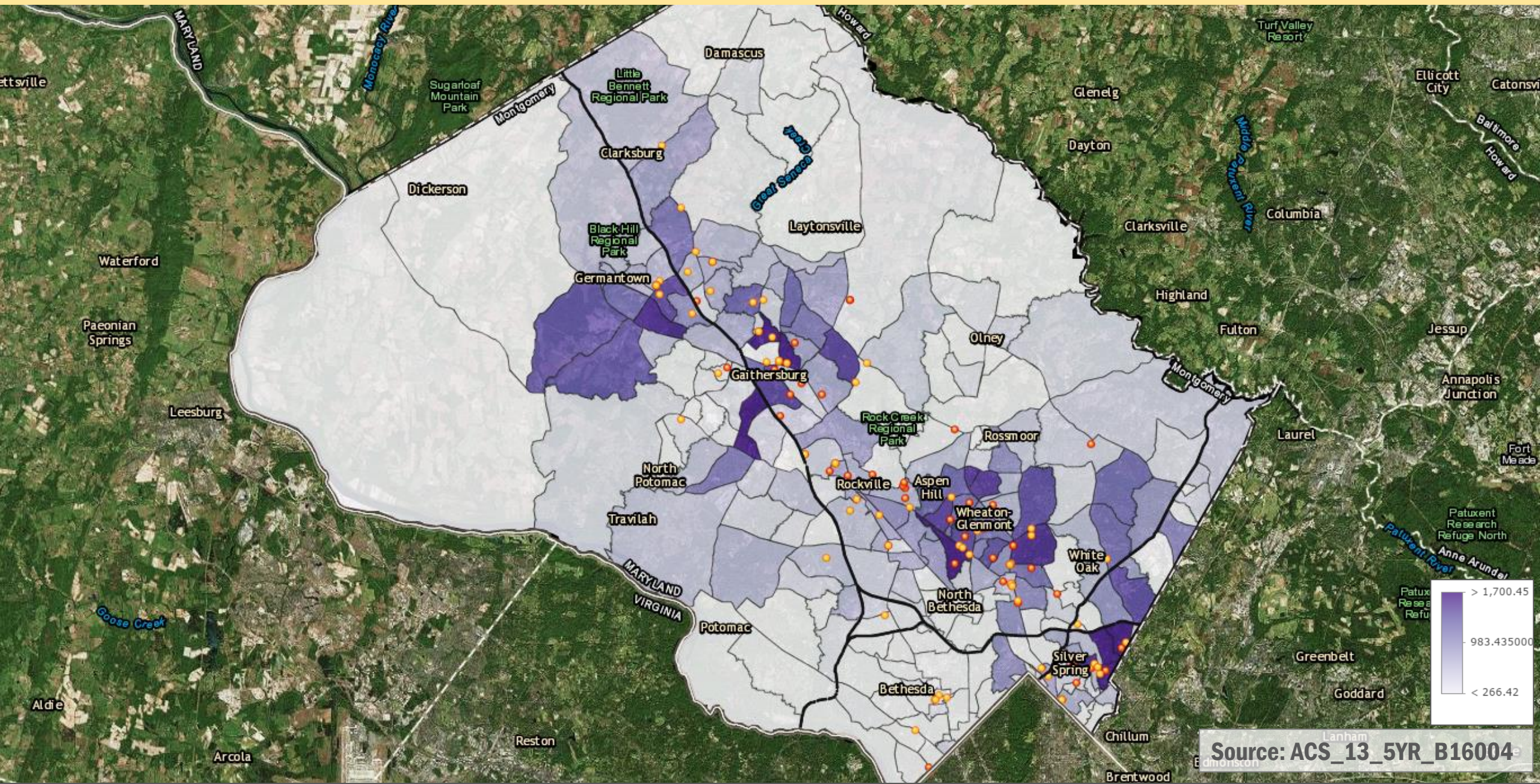


Adult English Literacy: Mapping the Diversity of Needs

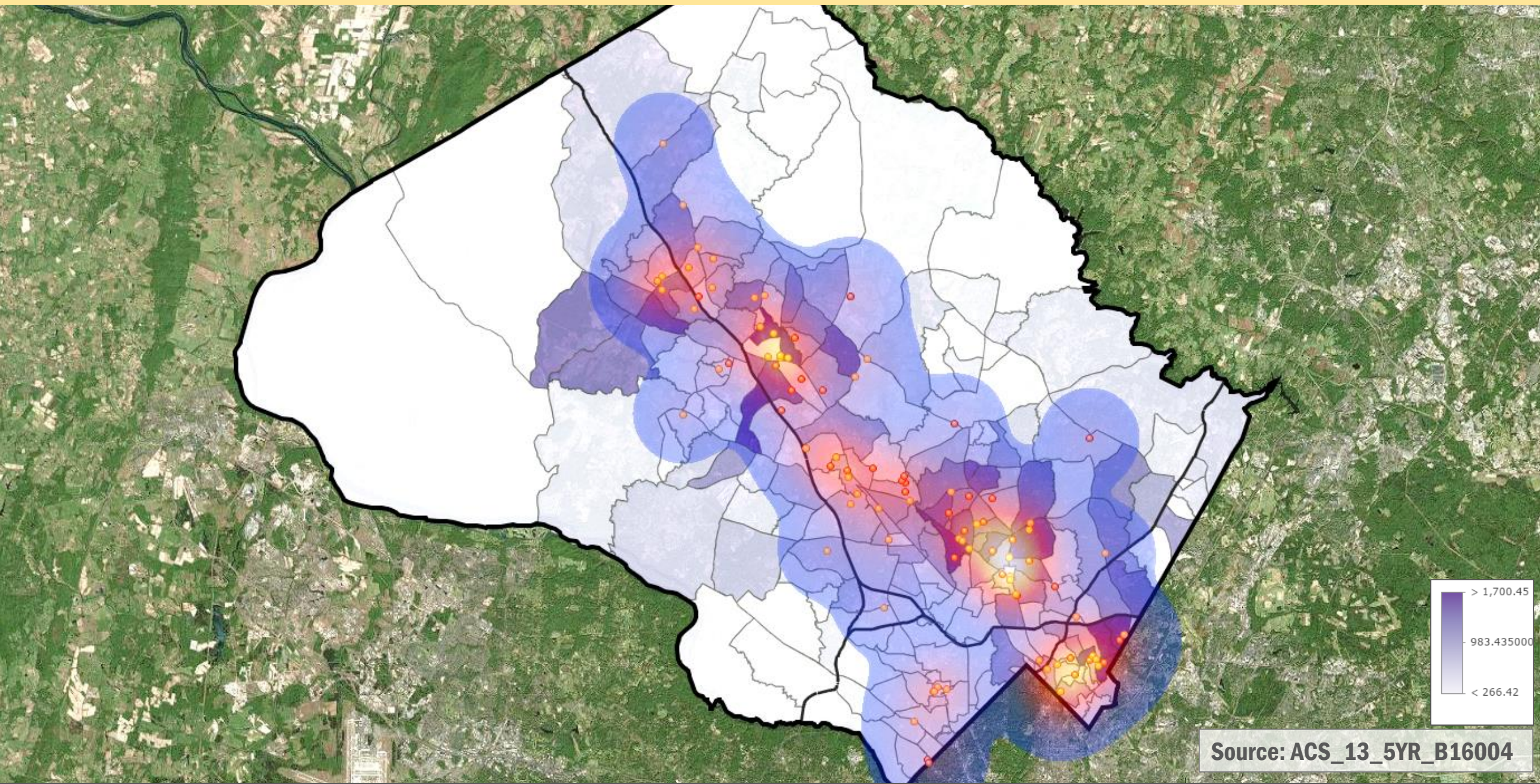
**PRESENTATION TO THE MONTGOMERY COUNTY COUNCIL
EDUCATION COMMITTEE**

7 DECEMBER 2015

DISTRIBUTION OF LIMITED ENGLISH PROFICIENT (LEP) POPULATION



HEAT MAP: CLASS LOCATIONS AND LEP POPULATION

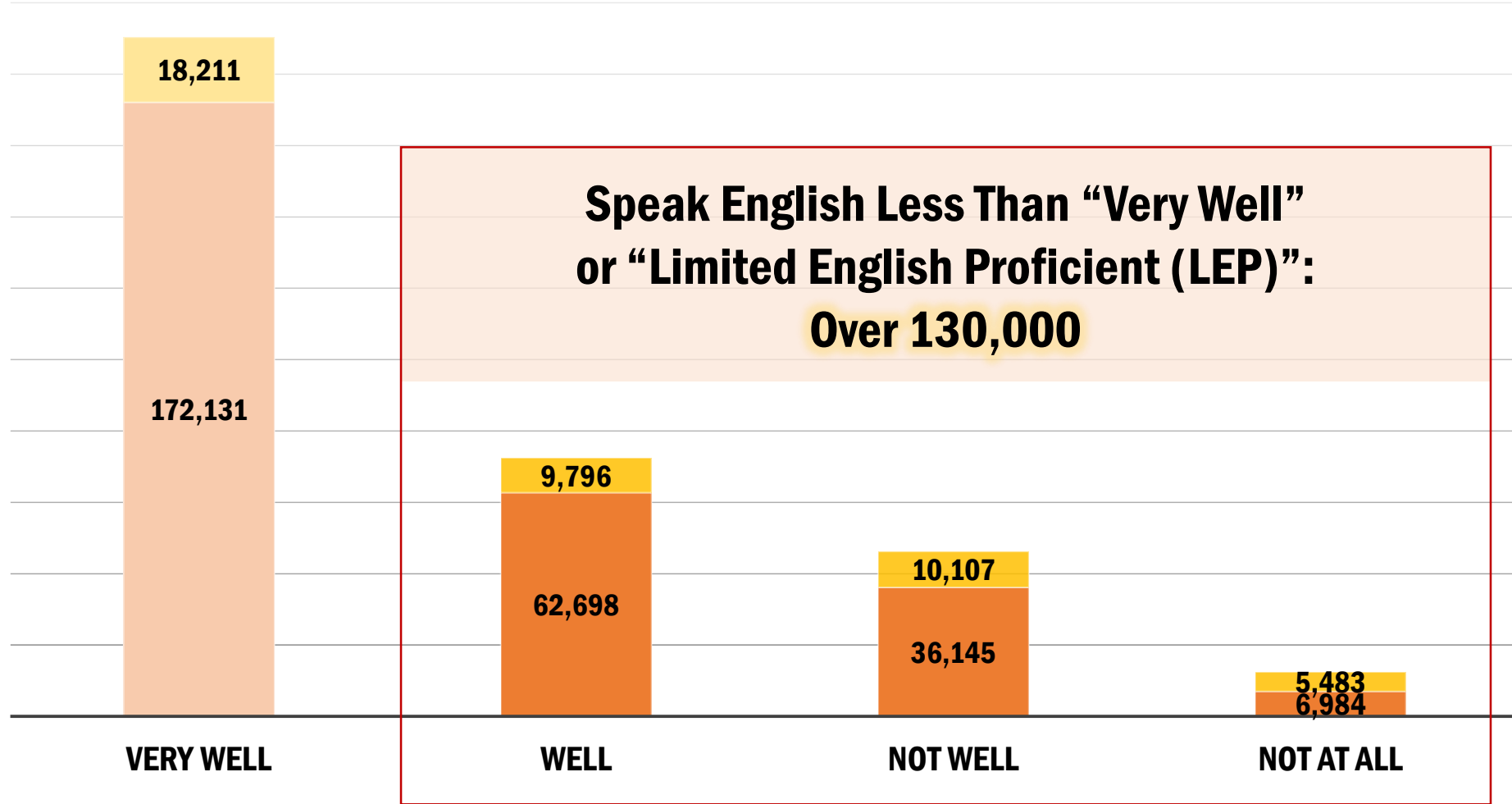


Source: ACS_13_5YR_B16004

Source: ACS 2014(1YR) Table: B16004

Speak English...

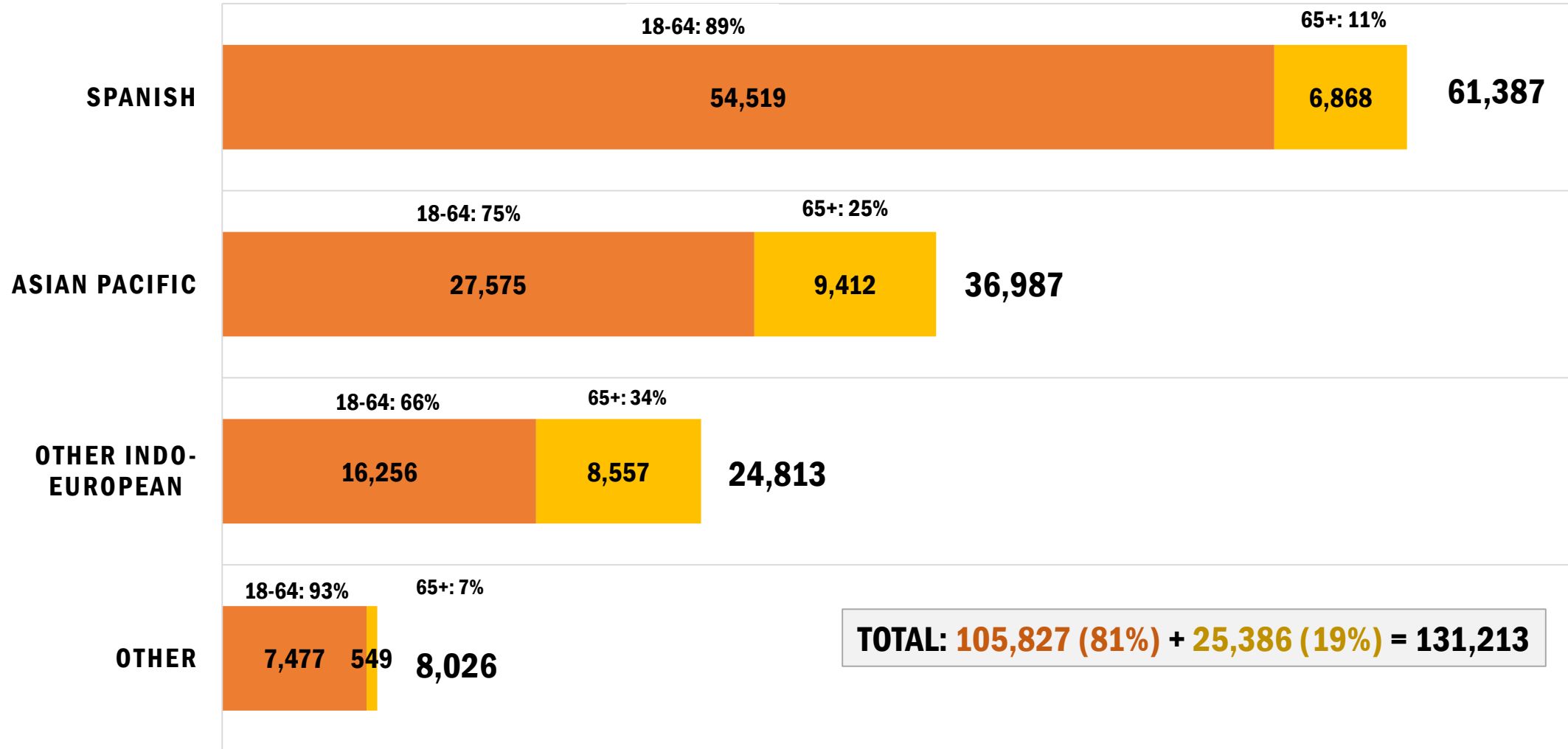
18 to 64 65+



LEP POPULATION BY LANGUAGE GROUP

Source: ACS 2014 (1YR) Table: B16004

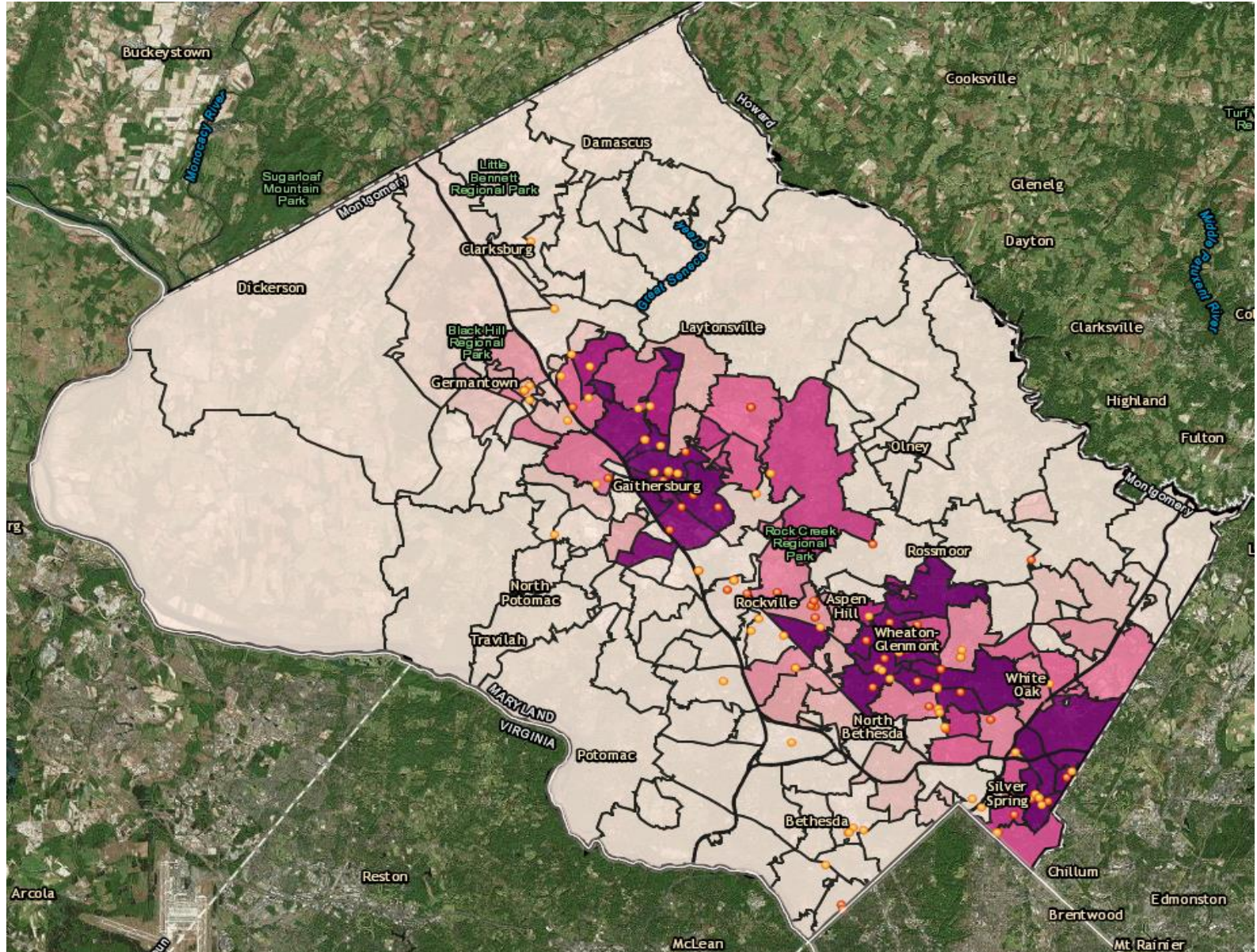
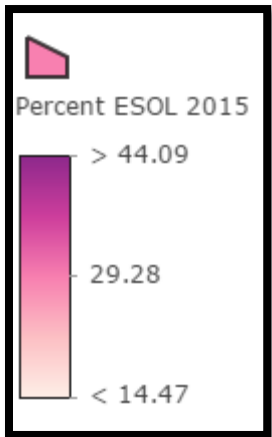
■ 18-64 Less Than Very Well ■ 65+ Less Than Very Well



TOTAL: 105,827 (81%) + 25,386 (19%) = 131,213

MONTGOMERY COUNTY PUBLIC SCHOOLS

**% ESOL BY
ELEMENTARY
SCHOOL
2014-15**

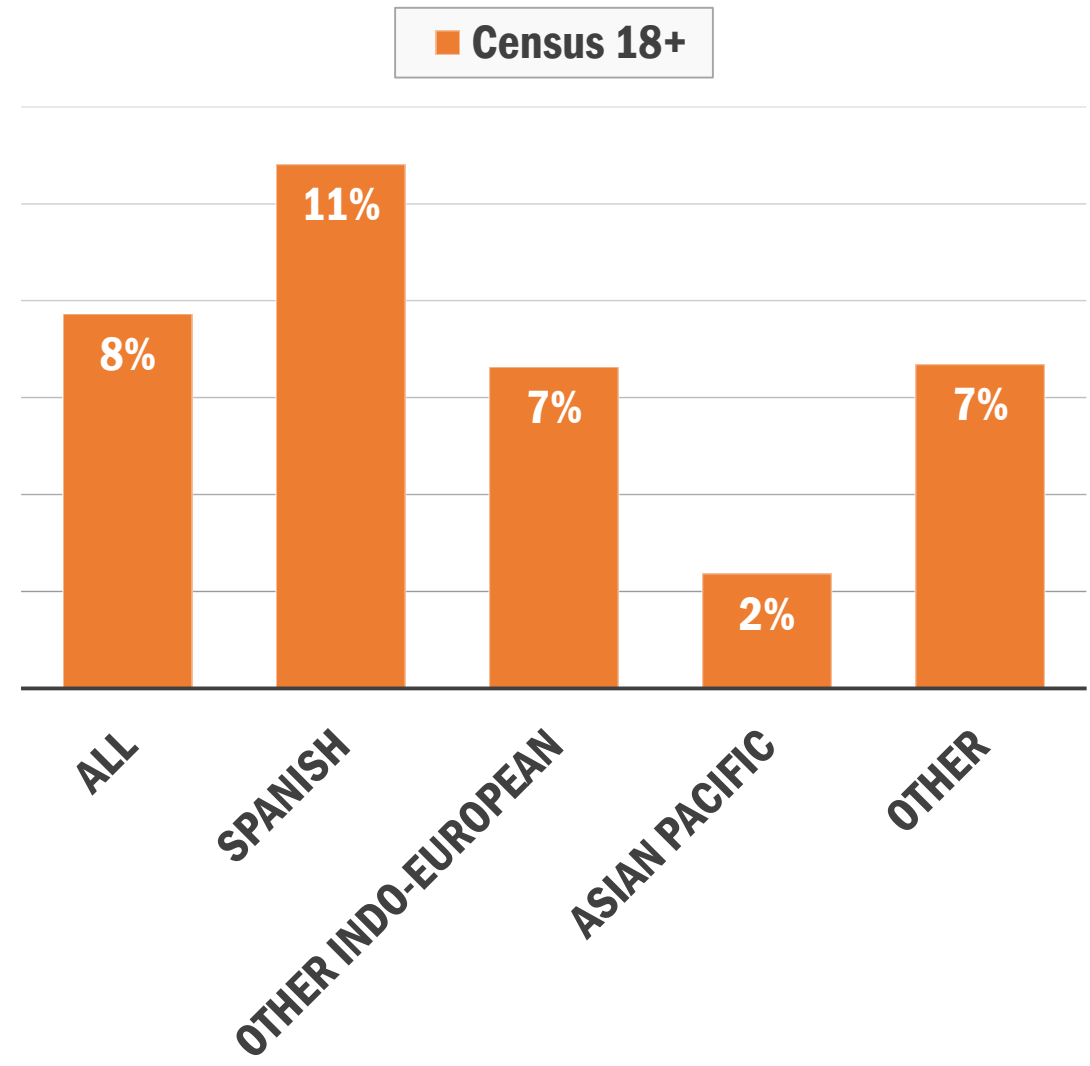


MCAEL NETWORK LEARNER DATA: LEARNERS AS % OF LEP POPULATION BY LANGUAGE GROUP

FY15 learner data (over 10,000 records) analyzed from MCAEL network service providers, including:

- 1) MCAEL grantees – 14 organizations, from 18 different programs
- 2) Montgomery College Adult ESOL and Literacy Grant (AELG) Program
- 3) Gilchrist Center for Cultural Diversity
- 4) Literacy Council of Montgomery County Tutoring Program

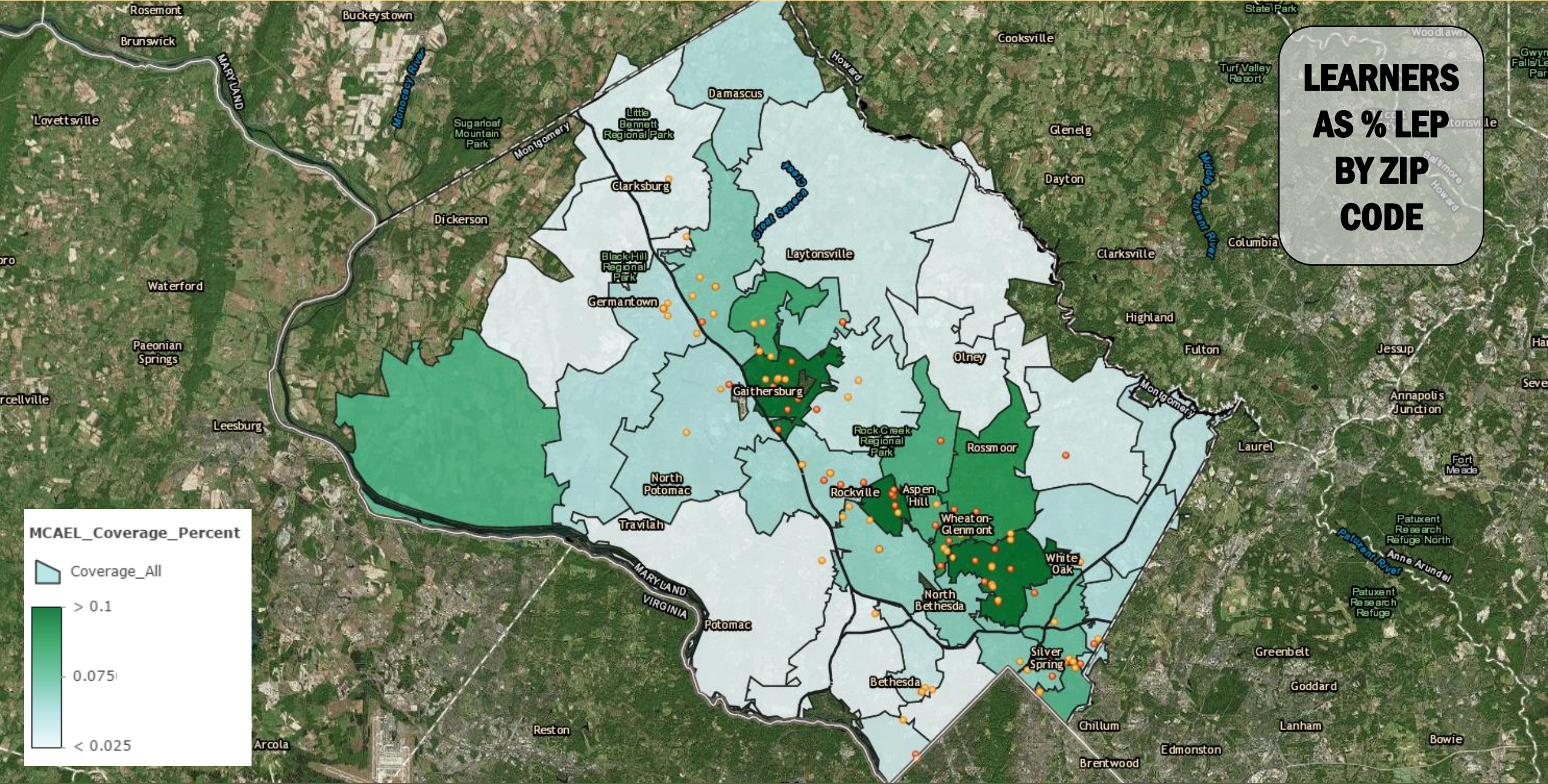
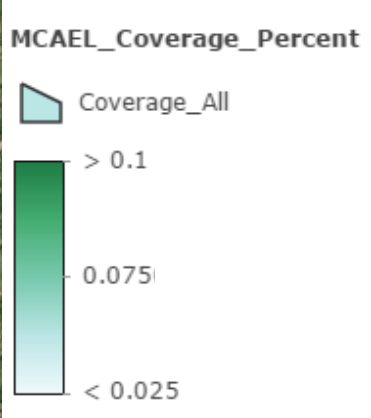
With all network service providers, the total number of learners in FY15 is approximately 15,000.



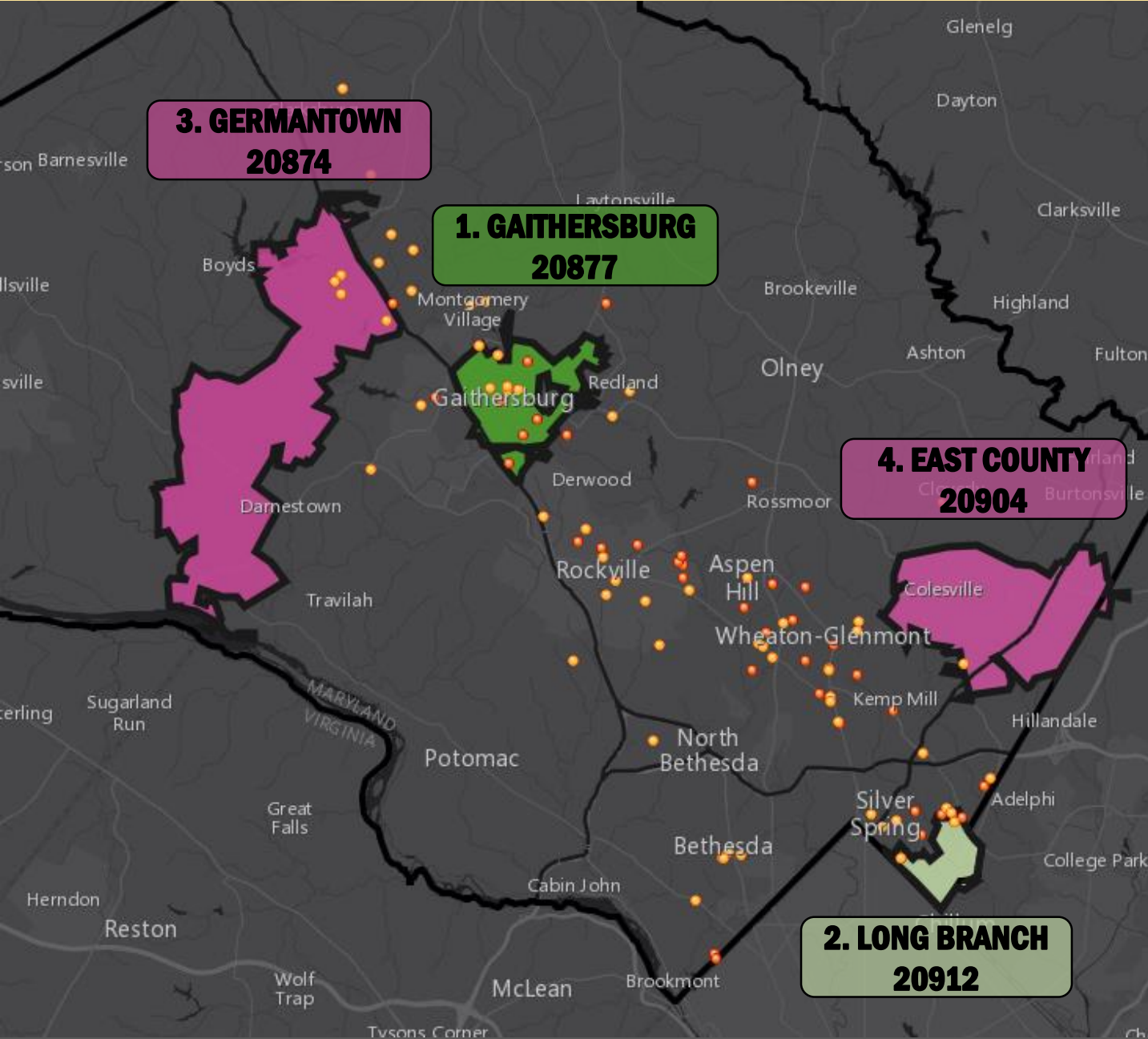
Note: "All" includes the 437 learners (4% of the total) for which no language group could be determined. These entries are not included in the specific language groups.

HOW WELL IS THE OVERALL LEP POPULATION BEING SERVED?

**LEARNERS
 AS % LEP
 BY ZIP
 CODE**

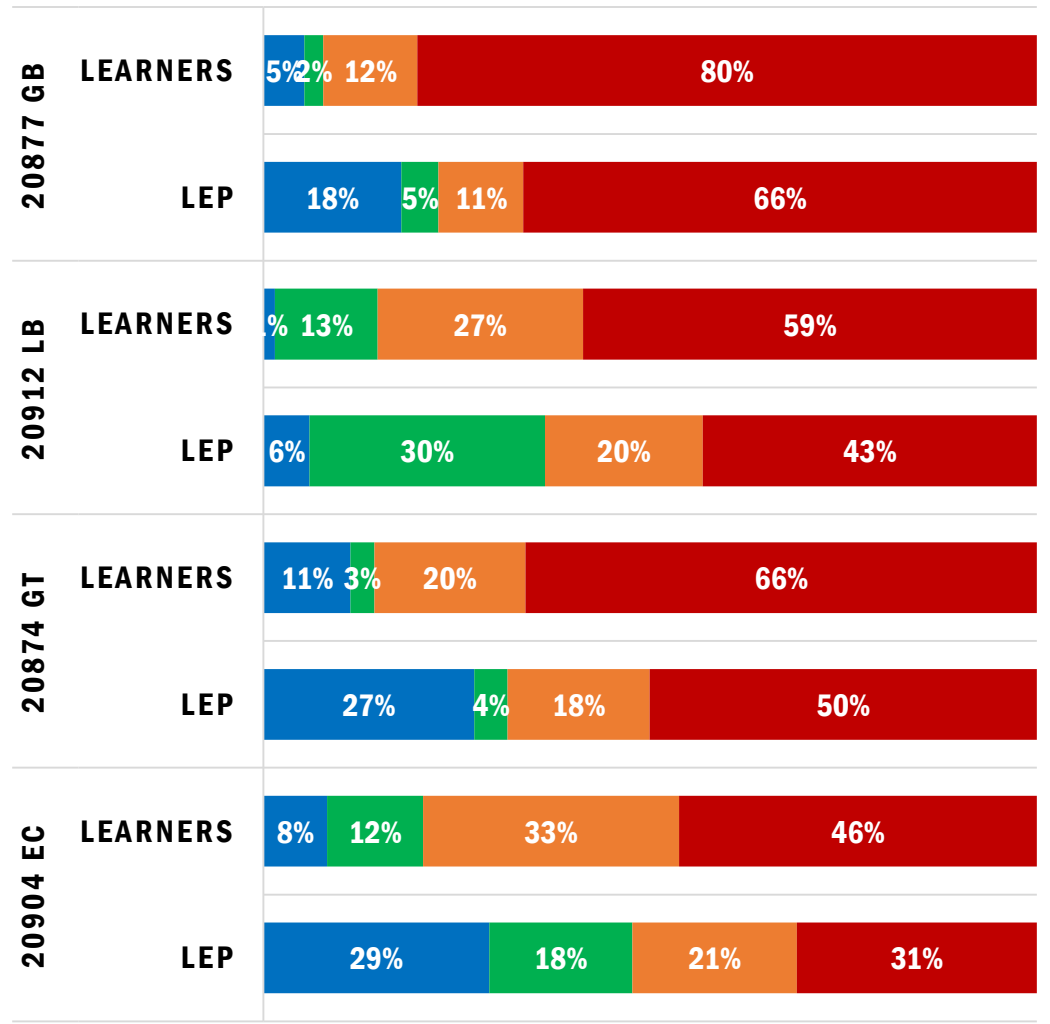


FOCUS AREAS

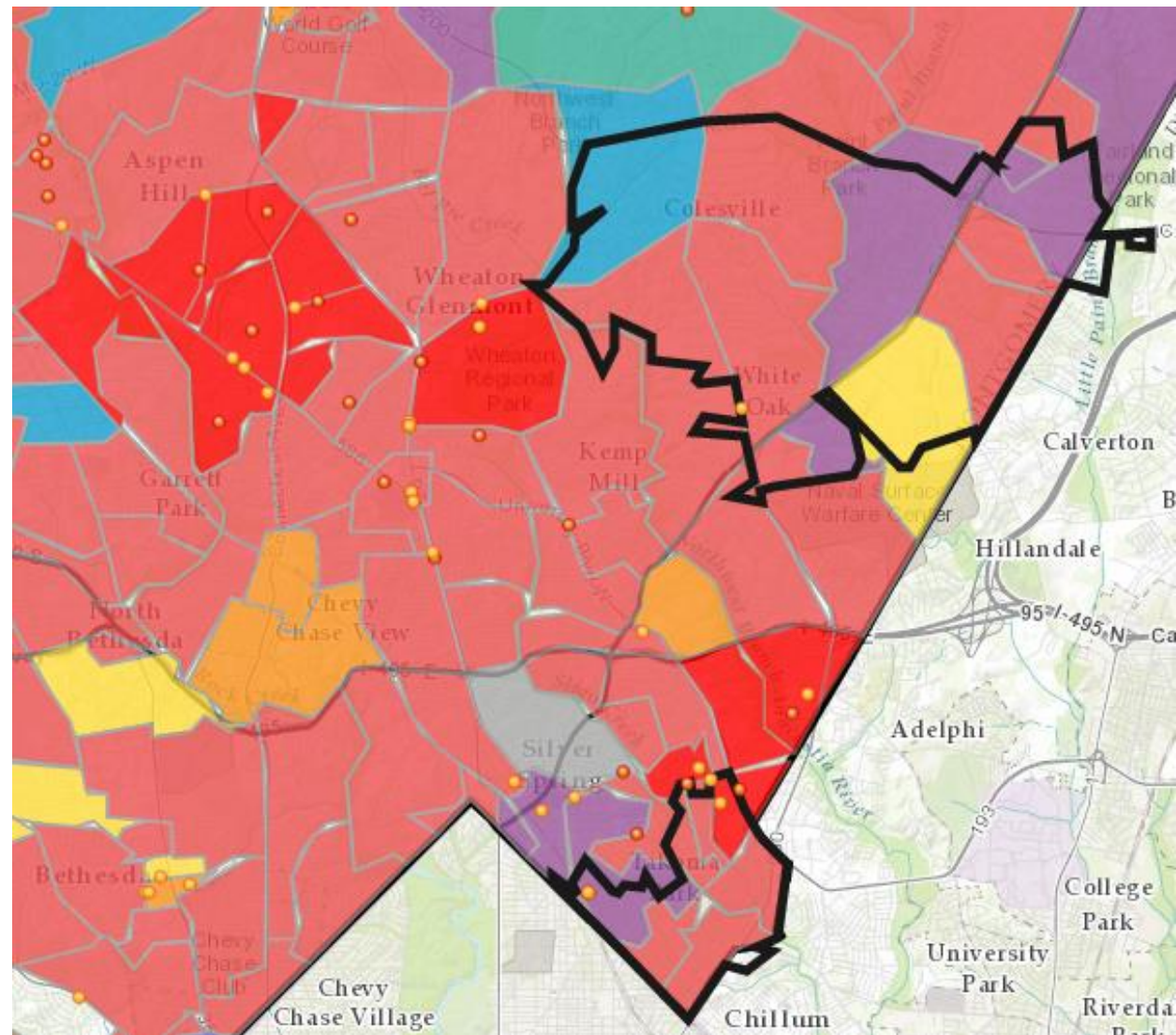
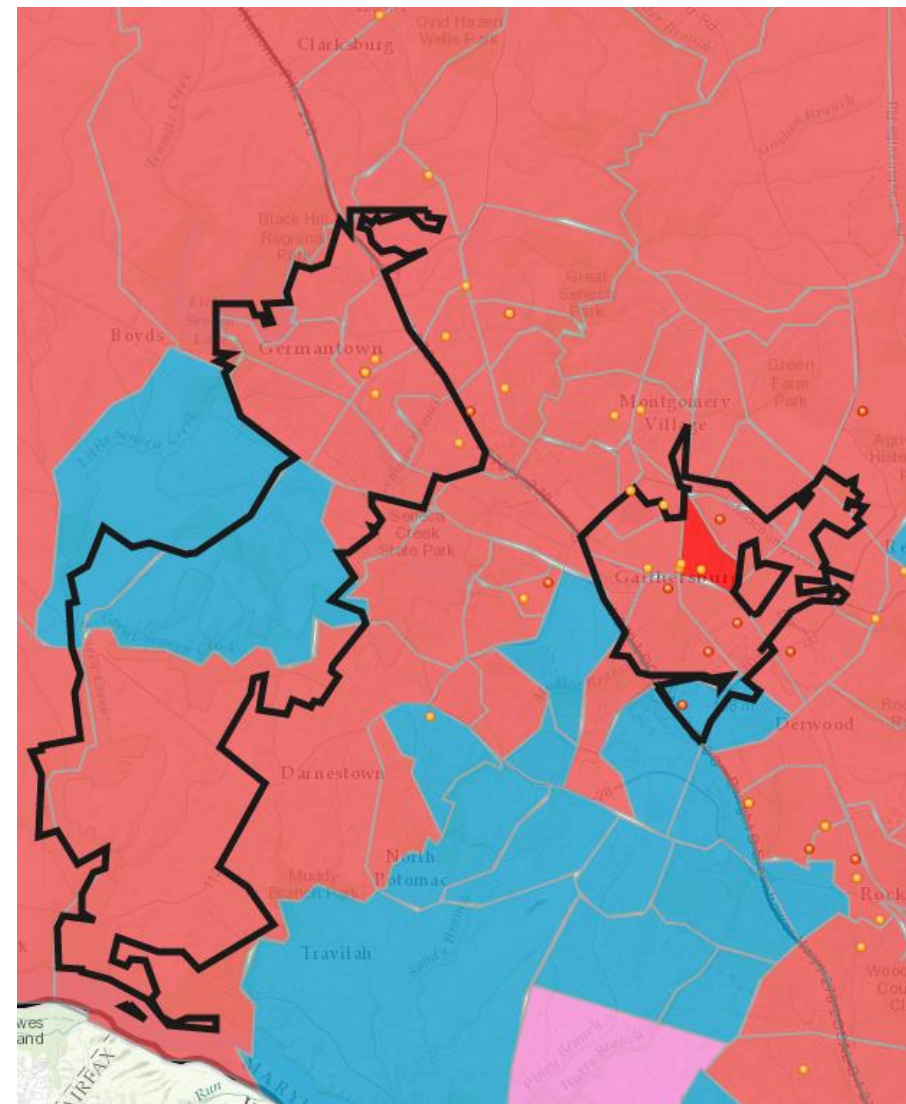


COMPARISON: LEP & LEARNERS

■ % AsianPac ■ % Other ■ % OtherEuro ■ % Spanish



SECOND MOST SPOKEN LANGUAGE



- Spanish
- Chinese
- English (Spanish 1st)
- African Languages
- Below 100
- French
- Persian
- German
- Korean
- Greek
- Other

- **Identify areas where there are providers poised to expand vs. where need to develop infrastructure**
- **Continue diversity of programming within the network**
- **Continue focusing on Quality and Quantity as guiding principles**
- **Look at projected population shifts, demographic changes**
- **Meet maximum need and balance site location across the county**
- **No “one size fix, fits all” for all learners**

Opportunities to Meet Diversity of Needs

- **Geographic** -additional targeted seats:
 - in high-need areas at established sites (e.g. Gaithersburg library)
 - in high-need, high LEP areas, with fewer established sites
- **Language Groups** – Outreach and assessment opportunities to serve speakers of Asian and Pacific Island languages
- **Addressing Obstacles to English Education**
 - **Scheduling** – weekend classes, employer based programs
 - **Appropriate class levels**
 - **Childcare**
 - **Transportation**

Kecia Addison, Montgomery County Public Schools

Shirley Brandman, MCAEL Board Member

Christina Bruce, Ana A. Brito Foundation Board Member

Peggy Keegan, MCAEL Board Member

Donna Kinerney, Montgomery College

Michael Knapp, SkillSmart

Dennis Linders, CountyStat

Christine Neil, Literacy Council of Montgomery County

Jayne Park, IMPACT Silver Spring

Cecilia Rojas, Community Ministries of Rockville

Monica Trent, Montgomery College, MCAEL Board Member

Diane Vy Nguyen-Vu, Office of Community Partnerships

Shari Waddy, Family Services Inc.

Vivian Yao, Montgomery County Council Staff